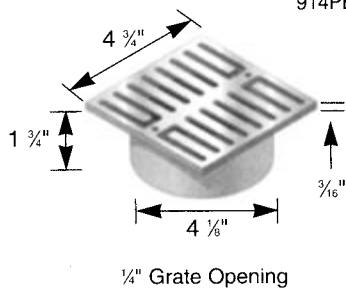


Drainage



Brass Grates

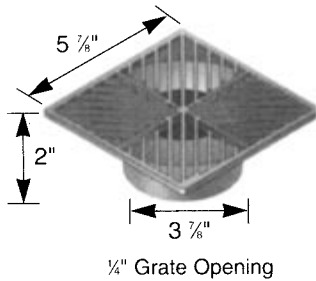


Part No.	Description	Color	Class	Specifications
914PB	5" Square Brass Grate w/Styrene Collar	Polished Brass	15BR	Grate with brass screws and styrene collar. Open surface area 3.00 square inches. 3.93 GPM.

Fits 4" Sewer and Drain Fittings, 3" Sewer and Drain Pipe and 3" Triple Wall Pipe.



6" Square Grate



Part No.	Description	Color
04	6" Square Grate	Black
05	6" Square Grate	Green

Fits 3" or 4" Sewer and Drain Pipe, 3" or 4" Corrugated Pipe and 3" or 4" Triple Wall Pipe.



Solvent Weld Sewer and Drain Fittings
3" & 4"

Description	Part No.	Pkg. Qty.	Color
Channel Grate 3ft. Channel Grate	540	48 ft.	White
Channel Drain 6 ft. Foot Mini Channel Drain	500	48 ft.	Grey

Sandbags



Burlap Sand Bag

12" x 18"
18" x 27"
24" x 40"

White Polyethelene Bag

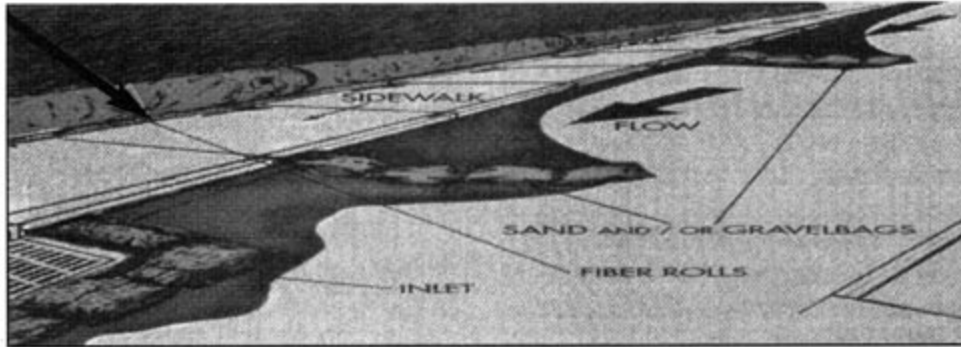
14" x 26"



Silt Fence, Fabrics, Sandbags

Fiber
Wattle

SILT FENCE & WATTLES



Orange Silt Fence

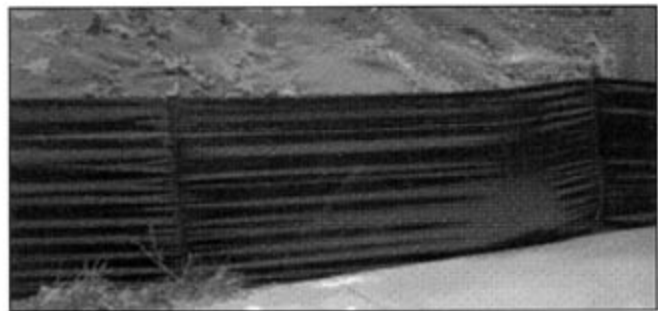
“Orange Silt Fence” is designed to be used where silt fence and orange warning fence need to be placed in the same location. The “Orange Silt Fence” can be used around electrical areas while construction is in progress, which will prevent silt run off into the road and finally into the storm drain. “Orange Silt Fence” is 3' high x 100' long and has a tensile strength of 100 lb. and lasts as long as regular black silt fence.



Pocketed Silt Fence

“Sacramento Bag’s “Pocketed Silt Fence” has pockets placed on 6' center and uses hard wood stakes inserted into the pocket. The pocket helps the stake from tearing away from the fabric.

Sacramento Bag’s “Heavy Duty Silt Fence” has hard-wood stakes at 8' centers and has a tensile strength of 120 lb. Silt fence needs to be installed stake facing away from the silt flow and contouring to the hillside. Place silt fence along the dirt side edge of a sidewalk to prevent soil washing into the street.



Straw or Coconut Wattles

Sacramento Bag’s “Straw or Coconut Wattles” are used around culverts or along the edge of a sidewalk to filter and slow water flows into the culvert. Install wattles in a prepared contoured concave trench 2 to 4 inches deep along the proposed installation route. This helps prevent water undercutting the roll. Drive stakes on alternating sides of the roll. When more than one roll is used they should be butted up end to end and not overlapped.



Woven Polypropylene Sandbags

Sacramento Bag’s “Woven Polypropylene Sandbags” are used to divert water away from a culvert and to help form pooling. They are very slow in filtrating water but do catch particle sizes as small as fine silt or .01 mm in size.

