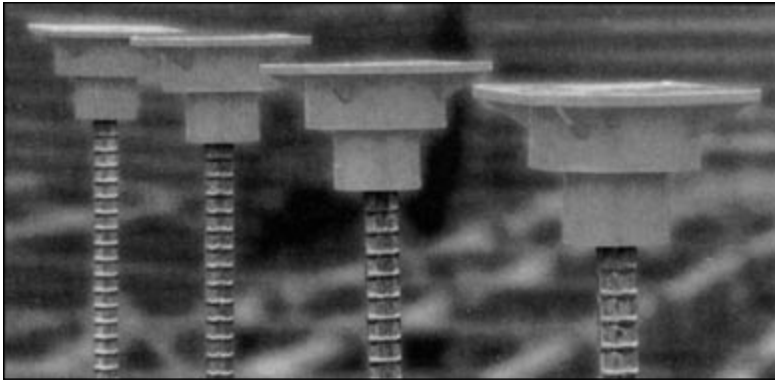


Rebar Safety Caps



DISC

DESLAURIERS IMPALEMENT-PROTECTION SAFETY CAP



Features:

- Approved by California OSHA #C1718-AG.
- Complies with Federal OSHA 701 (b).
- Federal OSHA has ruled that if cover is in compliance with Cal OSHA, then it conforms to Fed. 701 (b).
- Made of engineered high-impact plastic.
- 4 x 4 top surface area aids in protection.
- Fits a range of diameters.
- No exposed steel parts.
- Inspection hole to insure metal insert in place.

The DISC is designed to prevent impalement of a 250 pound worker from a height of 7-1/2 feet.*

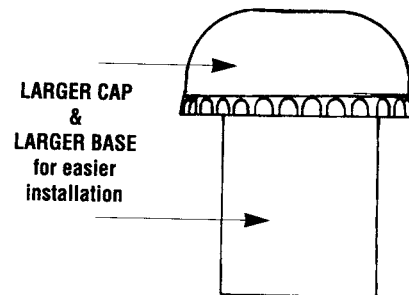
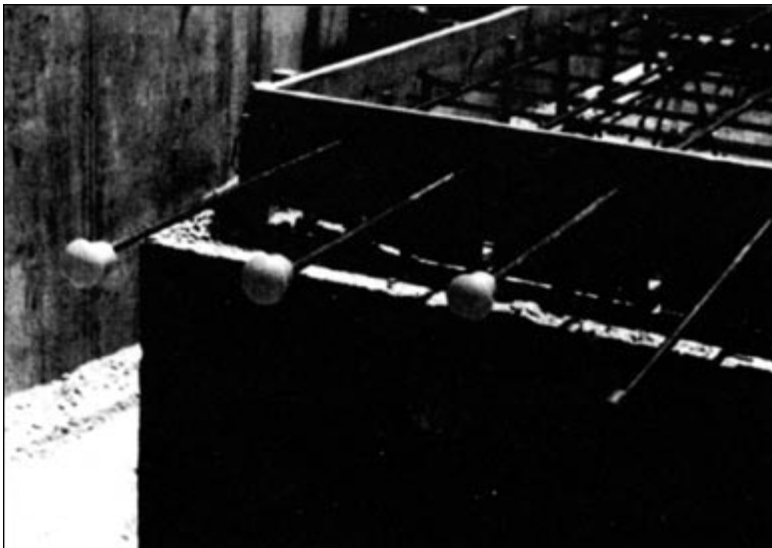
Protective covers are not allowed for fall distances in excess of 6 feet.

*Based upon test requirement developed by Cal OSHA.



Deslauriers DISC system is available in two sizes. DISC-10 fits #3-#10 bar sizes and DISC-20 fits #8-#20 bar sizes. Both sizes are available twenty-five to a carton.

ECON-O-GUARD PROTECTION CAP



Econ-O-Guard protection caps are brightly colored for good visibility, and fit a wide range of diameters:

Catalog #	PCS. Per Carton
EG10	100
EG20	50

EG10 - 3/8" diameter to 1" diameter.

EG20 - 1/2" diameter to 2-1/4" diameter.

ECON-O-GUARDS are designed and intended as a visual warning of a possible protruding hazard. Econ-O-Guards are not intended for use as fall or penetration protection.



Rebar Safety Caps

Carnie Cap™ Rebar Protective System

WORKING AROUND REBAR JUST GOT SAFER

The Carnie Cap System is superior to any other rebar impalement protection available today. Unlike traditional rebar caps, which provide little or no impalement protection, the Carnie Cap System, when used properly, will withstand a 250 pound weight dropped from ten feet without the rebar protruding.

The Carnie Cap is also less expensive than troughs. In fact, only two Carnie Caps are needed per each 8-foot section. Plus, by eliminating injuries, installation time and inventory overhead, Carnie Caps not only protect workers, they can protect a company's bottom line.

A CROWNING ACHIEVEMENT IN SAFETY

- Meets CAL-OSHA Construction Safety Orders Section #1712 on impalement protection from concrete reinforcing bars.
- Meets OSHA standards for withstanding 1 250 pound weight dropped from 7'6" without the rebar breaking through.
- When force is applied to the Carnie Cap system, the impact is distributed evenly over the entire length of the lumber.

PUTTING A CAP ON COSTS

- Economical.
- Packaged 100 per box for additional savings.
- Made of rugged, sturdy and reusable plastic.
- Quick and easy to install.
- Eliminates costs associated with injuries and downtime from rebar impalement.

CAP DANGEROUS REBAR ENDS

- Available for use in 2" x 4"s and 2" x 6"s.
- Fits rebar sizes #3-#9 and #5-#18.

APPLICATIONS

- Works in vertical, incline and horizontal applications.
- Uses only 2 caps per each 8-foot span. (In California, double the thickness of the lumber and space no greater than 4 feet apart.)
- Enables contractors to more efficiently use concrete blankets by utilizing the lumber as protective support so blankets don't become torn.

