

GROUT PUMPS

IDEAL FOR GROUTING METAL DOOR FRAMES

SPECIFICATIONS

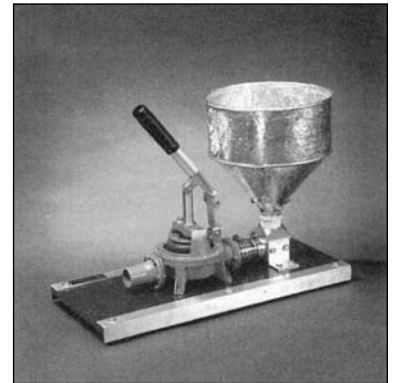
- Models: GP-1, GP-1HD, GP-2, GP-2HD
 Pump Type: Single Diaphragm, Self Priming
 Power Source: Hand Operated
 Output Capacity: 6 gallons/minute (48 cu. ft./hour)*
 Output Pressure: 0 to 15 psi
 Hopper Capacity: GP-1 & GP-1HD: .25 cubic foot (1.9 gallons)
 GP-2 & GP-2HD: .62 cubic foot (4.6 gallons)
 Placement Hose Size: 1 1/2" ID by 60 inches long, Clear Vinyl
 Discharge Head: 10 foot Vertical Lift
 Dimensions: GP-1 & GP-1HD: 22 1/2" x 10" x 14 1/2" high
 GP-2 & GP-2HD: 23 1/2" x 12" x 23" high
 Net Weight: GP-1 is 18 pounds, GP-1HD is 19 pounds
 GP-2 is 20 pounds, GP-2HD is 21 pounds
- *Output and performance will vary depending on cycle rate, viscosity of the grout mixture and pressure conditions.

OPTIONS

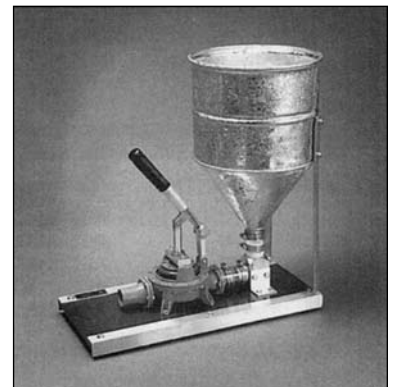
- Hose Reducer Kits: 3/4" and 1" ID available
 1 1/2" ID Hose Lengths: 10 foot, 15 foot and 20 foot available
 Hi-Capacity Hopper Kit: Converts GP-1 to GP-2, converts GP-1HD to GP-2HD
 Clevis Stabilizer Kit: Converts GP-1 to GP-1HD, converts GP-2 to GP-2HD
 Vertical Handle Kit: Vertical Actuator and Handle

HD PUMPS

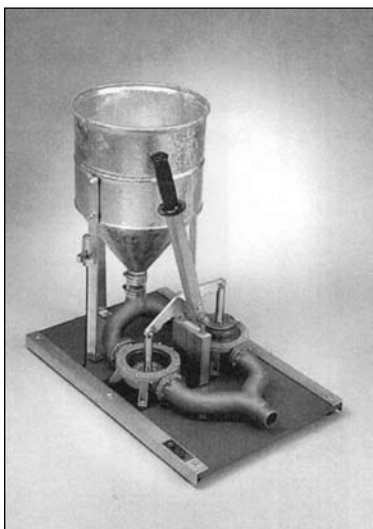
The GP-1HD and GP-2HD models incorporate a clevis stabilizer kit which eliminates clevis "tipping". These heavy duty pumps have a much longer diaphragm life and the improved mechanical efficiency reduces pumping effort.



GP-1HD



GP-2HD



GP-6

HIGH VOLUME GROUT PUMP

IDEAL FOR GROUTING HOLLOW CONCRETE BLOCK

SPECIFICATIONS

- Model: GP6
 Pump Type: Twin Diaphragm, Self Priming
 Power Source: Hand Operated
 Output Capacity: 11 gallons/minute (88 cu. ft./hour)*
 Output Pressure: 0 to 15 psi
 Hopper Capacity: .62 cubic foot (4.6 gallons)
 Placement Hose Size: 1 1/2" ID by 60 inches long, Clear Vinyl
 Discharge Head: 10 foot Vertical Lift
 Dimensions: 16 1/2" by 25" by 24" high
 Net Weight: 34 pounds

*Output and performance will vary depending on cycle rate, viscosity of the grout mixture and pressure conditions.

OPTIONS

- 1 1/2" ID Hose Lengths: 10 foot, 15 foot and 20 foot available